



# Snack Collection

**Packaging for On-The-Go Lifestyles**



# Perfectly Portable Packaging



- From black and clear PET to all-natural pulp, Sabert has a variety of material options to fit any snacking need.
- Patented SureStrip™ lid feature for square and rectangular tubs and containers keeps foods where consumers want it, not where they don't.

## SureStrip™ Feature

- Tamper-resistant SureStrip™ lids ensure foods are safe and fresh.
- Contemporary look and economical design allows for maximum shelf utilization and optimal merchandising.
- With locking lids and easy stackability, consumers can travel with confidence.



## Material Features to Meet Your Application

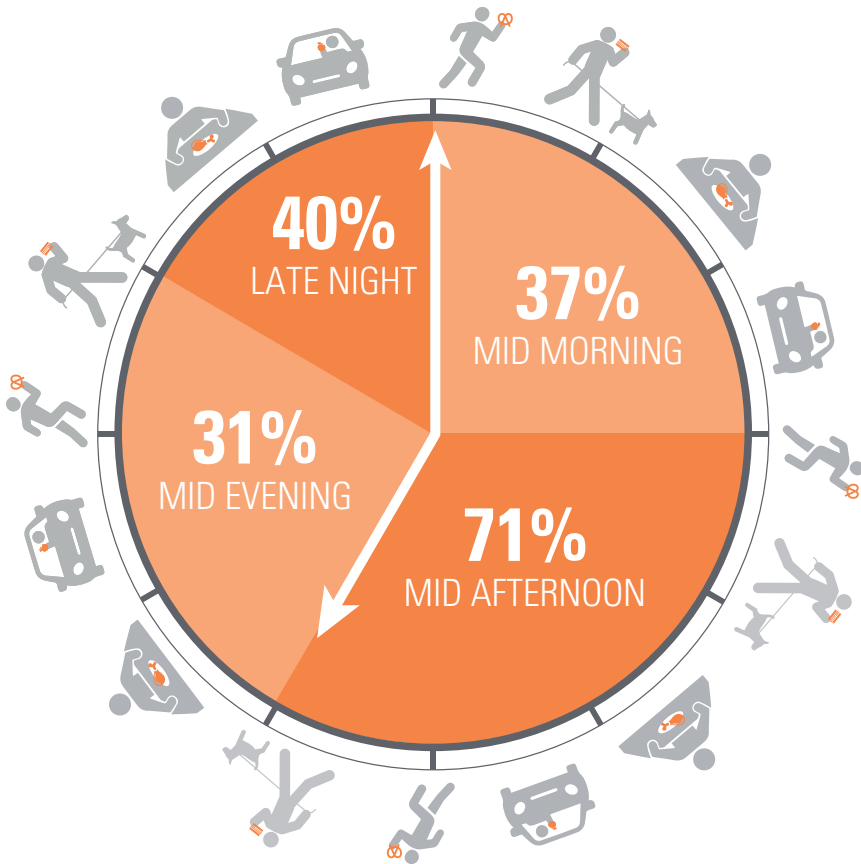
	Compostable	Recyclable	Microwaveable	Ovenable up to 400° F	Refrigerator friendly	Moisture Resistant
PULP	✓*		✓	✓	✓	✓
PET		✓**	✓		✓	✓

\*Unlaminated pulp items may be used in both industrial and back yard composters. (Compliant to ASTM 6868 as certified by BPI and Vinçotte. Ok compost Home as certified by Vinçotte.) Laminated pulp products are only industrially compostable (compliant to ASTM6868 as certified by BPI) . Some industrial composters may not be available in your area.

\*\*Where facilities exist. (Some may not be available in your area.)

# Anytime. Anywhere. Any Food.

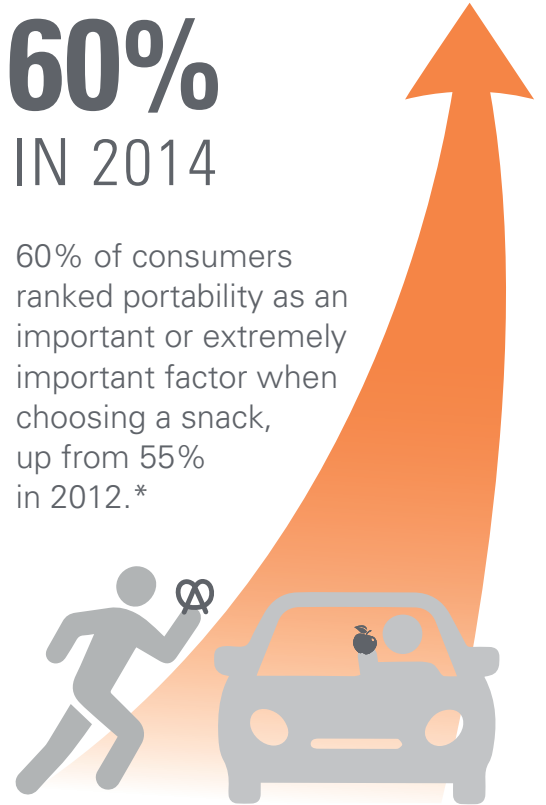
**MORE PEOPLE SNACKING  
MORE OFTEN**



Sabert's versatile, sustainable Snack Collection, consisting of a variety of material and size options, is perfect for today's on-the-go consumer and can be used with nearly any food type at any time of day!

**60%**  
IN 2014

60% of consumers ranked portability as an important or extremely important factor when choosing a snack, up from 55% in 2012.\*



\*Technomic, 2014



## Functionality

Efficient, stackable shapes and superior leak-resistant lids keep foods fresh and secure on the shelf, in a purse or on a desk.



## Sustainability

Made from 100% compostable or recyclable materials, Sabert's Snack Collection is environmentally friendly and efficiently designed.



## Versatility

From sandwiches and subs to sushi and salads, Sabert's Snack Collection offers a variety of on-the-go packaging solutions for today's mobile consumers.

# Made for Merchandising

- **Visibly Fresh:** Clear, anti-fog lids let consumers see the food before they buy it.
- **Boost Profits:** Sabert's Snack Collection helps customers increase revenues and profitability by showing all the ingredients that go into your foods.



NEW!



**Solution to the Sandwich Wedge**

## Designed to Display

- **Sabert's Solution to the Sandwich Wedge:** Increase profits and showcase ingredients with its versatile square-shaped design, taking sandwiches from ordinary to extraordinary.
- **Verified Variety:** Full line of 40+ items featuring elegant designs suited for any on-the-go food type, from focaccia and flatbreads to brie and berries.
- **Compostable Choices:** Sabert's pulp products are both home compostable and industrial compostable.\*
- **Versatile Options:** Multiple domed and flat lid options available for sleek wraps or robust sandwiches.

## Ahead of Today's Snacking Trends

**90%**

of consumers eat  
**at least 1 sandwich**  
per week\*\*

**1** out of **3**

consumers are  
**snacking more frequently**  
than two years ago\*\*\*

**51%**

of consumers say they  
**snack at least twice**  
**a day**\*\*\*

\*Unlaminated pulp items may be used in both industrial and back yard composters. (Compliant to ASTM 6868 as certified by BPI and Vinçotte. Ok compost Home as certified by Vinçotte.) Laminated pulp products are only industrially compostable (compliant to ASTM6868 as certified by BPI) . Some industrial composters may not be available in your area.

Where facilities exist. (Some may not be available in your area.)

\*\*Smart Brief, 2014

\*\*\*Technomic, 2014




# Snack Collection Specifications

	Category	Item Number	Item Description	Item Dimensions (in inches)	Material	Case Pack
	<b>Small Sandwich Container</b>	900606D300	Black Small Sandwich Container	5.25 x 5.25 x 1.07	PET	300
		400606D300	Pulp Small Sandwich Container	5.15 x 5.15 x 1.07	PULP	300
		530606D300	Clear Lid for Black and Pulp Small Sandwich Container	5.25 x 5.25 x 1.8	PET	300
	<b>Large Sandwich Container</b>	100606F300N	Clear Large Sandwich Container	6 x 6 x 1.2	PET	300
		900606F300N	Black Large Sandwich Container	5.99 x 5.99 x 1.2	PET	300
		530606F300N	Lid for Clear and Black Large Sandwich Container	5.99 x 5.99 x 1.79	PET	300
		405555D	<b>NEW!</b> Pulp Large Sandwich Container	5.51 x 5.51 x 1.04	PULP	300
		535555D	<b>NEW!</b> Clear Lid for Pulp Large Sandwich Container	5.75 x 5.75 x 2.1	PET	300
	<b>Sabert Sandwich Wedge</b>	404555D	<b>NEW!</b> Pulp Sabert Sandwich Wedge	5.5 x 4.5 x 1.04	PULP	300
		534555D	<b>NEW!</b> Clear Lid for Pulp Sabert Sandwich Wedge	4.75 x 5.73 x 2.1	PET	300
	<b>Small Sub Container</b>	100805F300N	Clear Small Sub Container	8.1 x 4.4 x 1.21	PET	300
		900805F300N	Black Small Sub Container	8.15 x 4.38 x 1.21	PET	300
		530805F300N	Clear Lid for Clear and Black Small Sub Container	8.15 x 4.38 x 1.8	PET	300
		400408D300	Pulp Small Sub Container	8 x 3.9 x 1.04	PULP	300
		520408D300	Clear Lid for Pulp Small Sub Container	8.5 x 4.4 x 1.3	PET	300
	<b>Medium Sub Container</b>	C910905F150N	Combo Black Medium Sub Container/ Clear Lid	9.5 x 4.5 x 3	PET	150
		401045D300	<b>NEW!</b> Pulp Medium Sub Container	9.49 x 4.54 x 0.97	PULP	300
		531045D300	<b>NEW!</b> Clear Lid for Pulp Medium Sub Container	9.74 x 4.74 x 2.1	PET	300
	<b>Large Sub Container</b>	101105F300N	Clear Large Sub Container	11.18 x 4.56 x 1.25	PET	300
		901105F300N	Black Large Sub Container	11.18 x 4.56 x 1.25	PET	300
		531105F300N	Clear Lid for Clear and Black Large Sub Container	11.25 x 4.18 x 1.83	PET	300
		C901105F150N	Combo Black Large Sub Tray/ Clear Lid	11.18 x 4.56 x 3.08	PET	150
	<b>Snack Box</b>	C1812B150	Combo Clear 28 oz. container with Dip Cup Compartment and Clear Flat Lid	7.5 x 7.5 x 2.88	PET	150
		C18132B150	Combo Clear 32 oz. Container with Dip Cup Compartment and Clear Flat Lid	7.5 x 7.5 x 2.88	PET	150
		169572B450	Clear Medium Two-Compartment Snack box	6.91 x 5.65 x 1.67	PET	450
		569570B450	Clear Lid for Clear Medium Two-Compartment Snack box	6.91 x 5.65 x 0.32	PET	450
		184623B300	Clear Large Three-Compartment Snack box	8.42 x 6.14 x 1.67	PET	300
		584620B300	Clear Lid for Clear Large Three-Compartment Snack box	8.42 x 6.14 x 0.32	PET	300
		C184623B150	Combo Clear Large Three-Compartment Bento Box with Clear	8.42 x 6.14 x 1.99	PET	150
	<b>Snack Tray</b>	900608D300	Black Snack Tray	7.8 x 5.7 x 0.78	PET	300
		400608D300	Pulp Snack Tray	7.84 x 5.67 x 0.78	PULP	300
		520608D300	Clear Lid for Black and Pulp Snack Tray	6.1 x 8.3 x 1.3	PET	300

For more packaging specifications see back

Visit [www.Sabert.com](http://www.Sabert.com). for more information or call 1 (800) 722-3781.

# Snack Collection Specifications

Category	Item Number	Item Description	Item Dimensions (in inches)	Material	Case Pack
 <b>Tamper Resistant Rectangle - Small</b>	15608TR	Clear Small 8 oz. Rectangle Container	5.75 x 4.88 x 1.25	PET	504
	15612TR	Clear Small 12 oz. Rectangle Container	5.75 x 4.88 x 1.63	PET	504
	15616TR	Clear Small 16 oz. Rectangle Container	5.75 x 4.88 x 2.13	PET	504
	5560TR	Clear TR Lid for Clear Small Rectangle Container	5.75 x 4.88 x 0.38	PET	504
	5560SL	Clear Outside Lock Lid for Clear Small Rectangle Container	6.04 x 5.17 x 0.75	PET	504
 <b>Tamper Resistant Rectangle - Medium</b>	17620TR	Clear Medium 20 oz. Rectangle Container	7.37 x 5.65 x 1.81	PET	390
	17622TR	Clear Medium Divided Rectangle Container	7.37 x 5.65 x 1.81	PET	390
	17624TR	Clear Medium 24 oz. Rectangle Container	7.37 x 5.65 x 2.13	PET	390
	5760TR	Clear TR Lid for Clear Medium Rectangle Container	7.37 x 5.65 x 0.44	PET	390
	5760SL	Clear Outside Lock Lid for Clear Medium Rectangle Container	7.65 x 5.94 x 0.88	PET	390
 <b>Tamper Resistant Square Tubs</b>	14008TR1000	Clear 8 oz. Square Tub	4.75 x 4.75 x 1.36	PET	1000
	14012TR1000	Clear 12 oz. Square Tub	4.75 x 4.75 x 1.91	PET	1000
	14078TR1000	Clear 18 oz. Square Tub	4.75 x 4.75 x 2.78	PET	1000
	14024TR500	Clear 24 oz. Square Tub	4.75 x 4.75 x 3.77	PET	500
	14024DBTR500	Clear 24 oz. Dome Bottom Square Tub	4.75 x 4.75 x 3.77	PET	500
	51402TR1000	Clear TR lid for Square Tubs	4.75 x 4.75 x 0.67	PET	1000
	51400NTR1000	Clear Inside Lock Lid for Square Tubs	4.75 x 4.75 x 0.35	PET	1000
 <b>Parfait Cup Insert</b>	5140SL1000	Clear Outside Lock Lid for Square Tubs	5 x 5 x 0.62	PET	1000
	13003D500PP	Clear 3 oz. Parfait Cup Insert (PP)	2.75 x 1.19	PP	500
	14003D1000	Clear 4 oz. Parfait Cup Insert	3.5 x 1.06	PET	1000

For more packaging specifications see inside

